

# 11420 Wadsworth Blvd

BROOMFIELD, COLORADO 80020

Sale Price: \$1,816,495.56

Price per SF: \$8.50

Size: 4.906 Acres

- Commercial/Retail/Office
- Restaurant/Hotel
- Fuel Station

- Near Broomfield Event Center and Broomfield Corporate Center

- Visibility to Hwy 
- Located at Old Wadsworth Blvd and Uptown Blvd

**UNDER CONTRACT!**



**Mixed Use**  
4.906 Acres

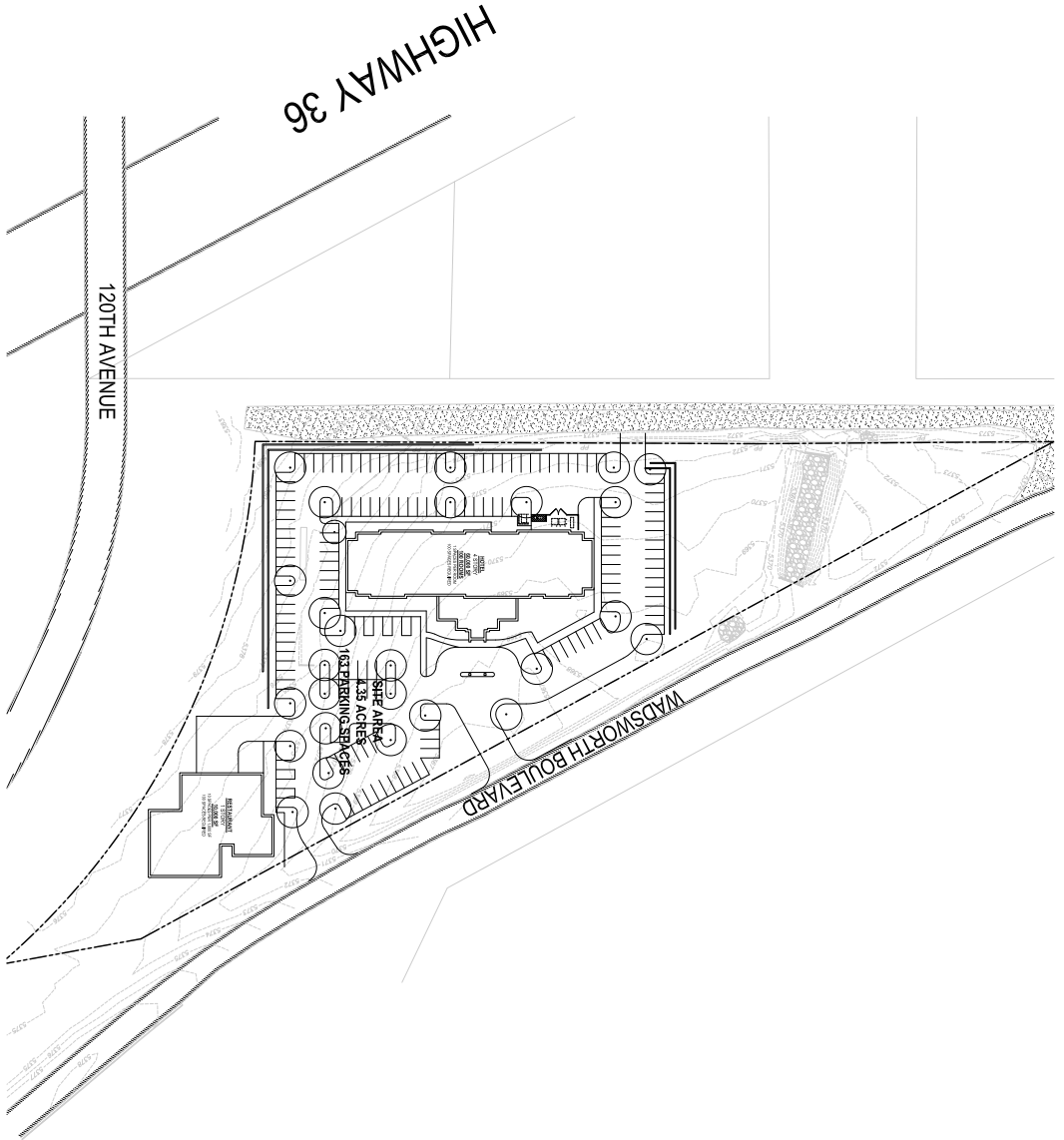
- Zoned Commercial / Industrial (I-2)
- Office/Retail
- Hotel/Motel/Fuel Station

**WHEELER**  
Properties

1130 38th Avenue, Suite B • Greeley, CO 80634  
WheelerPropertiesInc.com • 970-352-5860

Information deemed reliable, but not guaranteed. Price, terms and conditions subject to change.



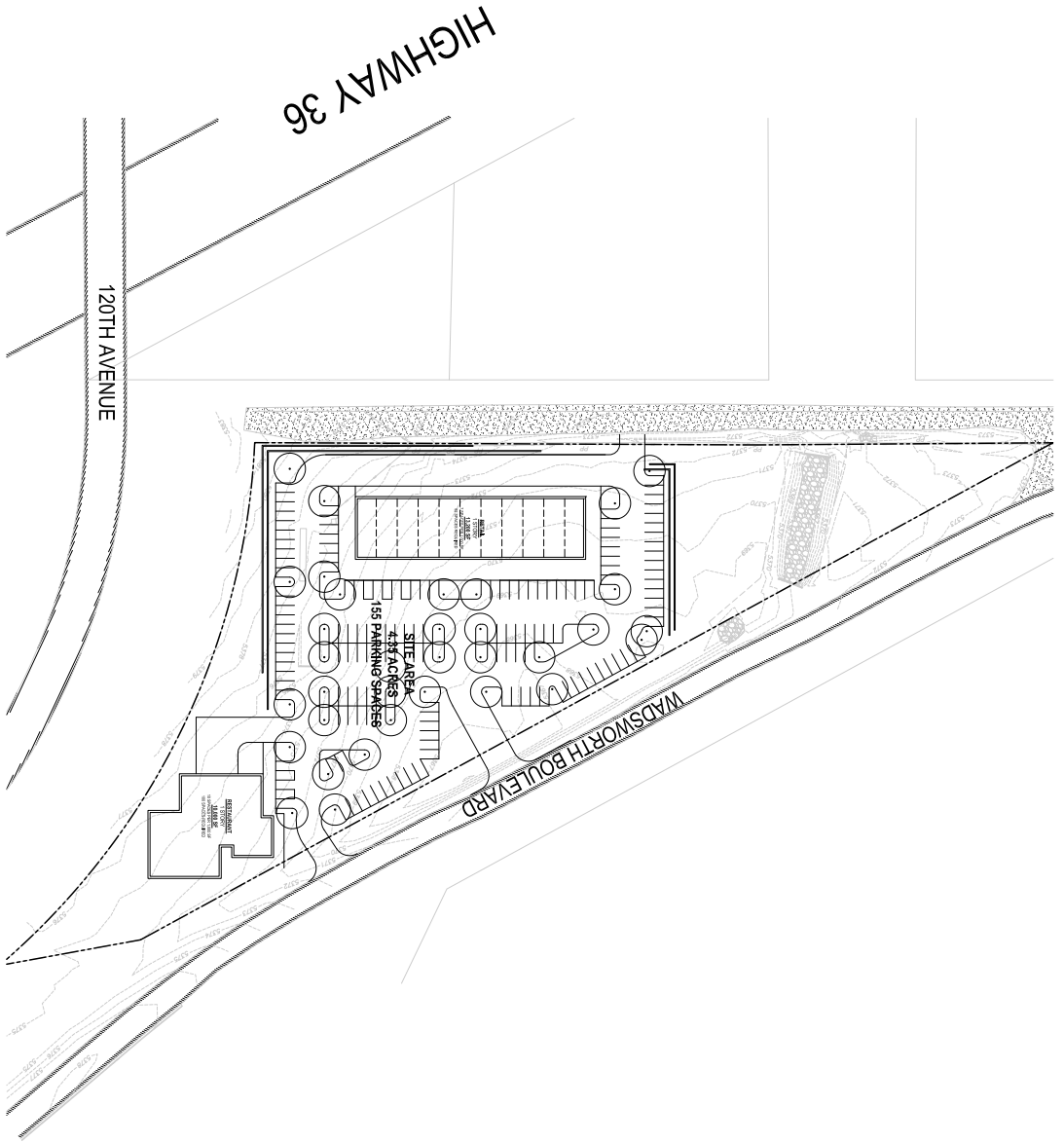


**BROOMFIELD MIXED USE**  
 Wheeler Properties, Inc.

2016, Galoway & Company, Inc. All rights reserved.



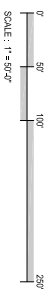
**CONCEPTUAL SITE PLAN**  
 08.25.2017



**BROOMFIELD MIXED USE**  
 Wheeler Properties, Inc.

**CONCEPTUAL SITE PLAN - OPTION B**

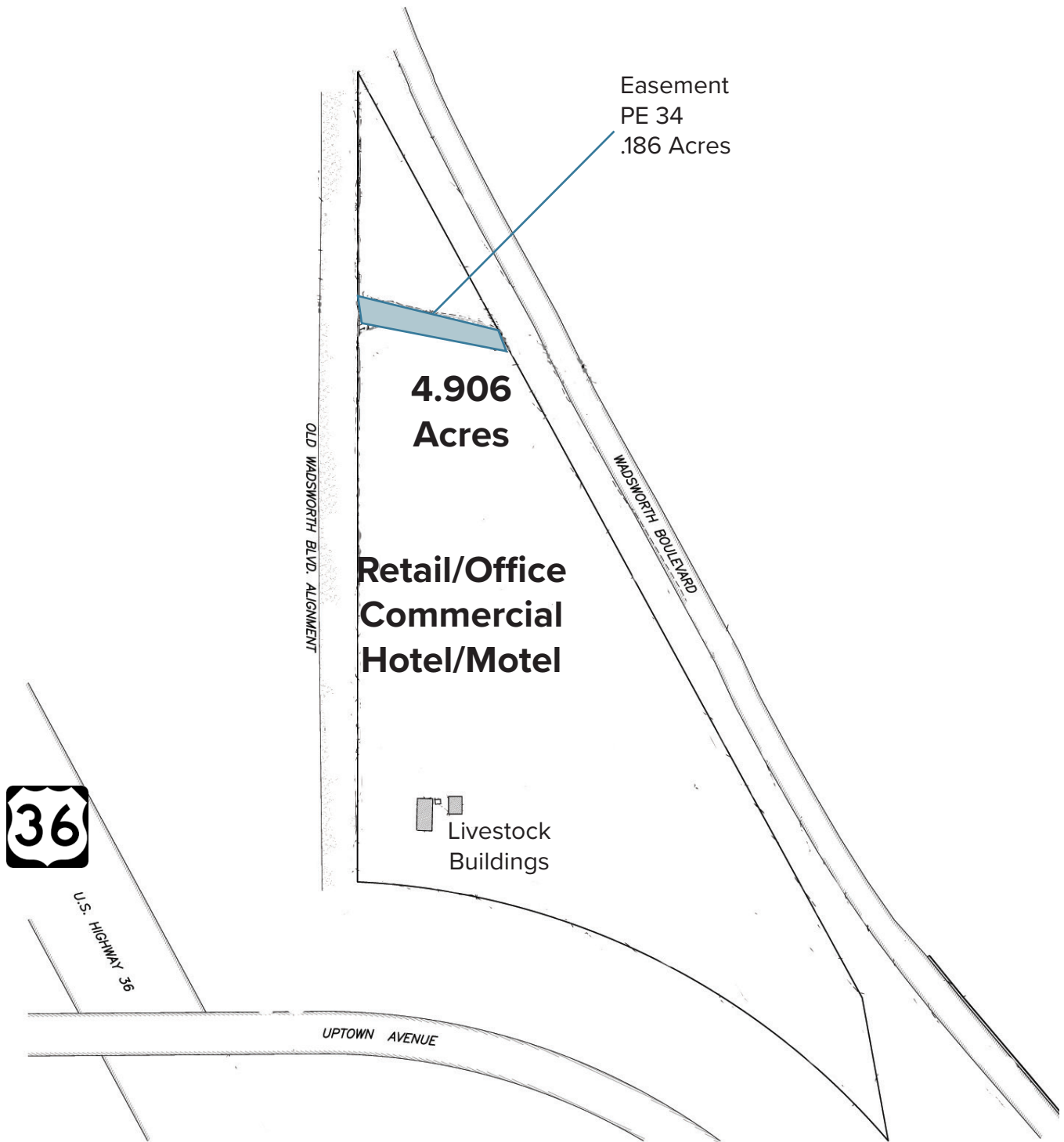
2016, Galloway & Company, Inc. All rights reserved.

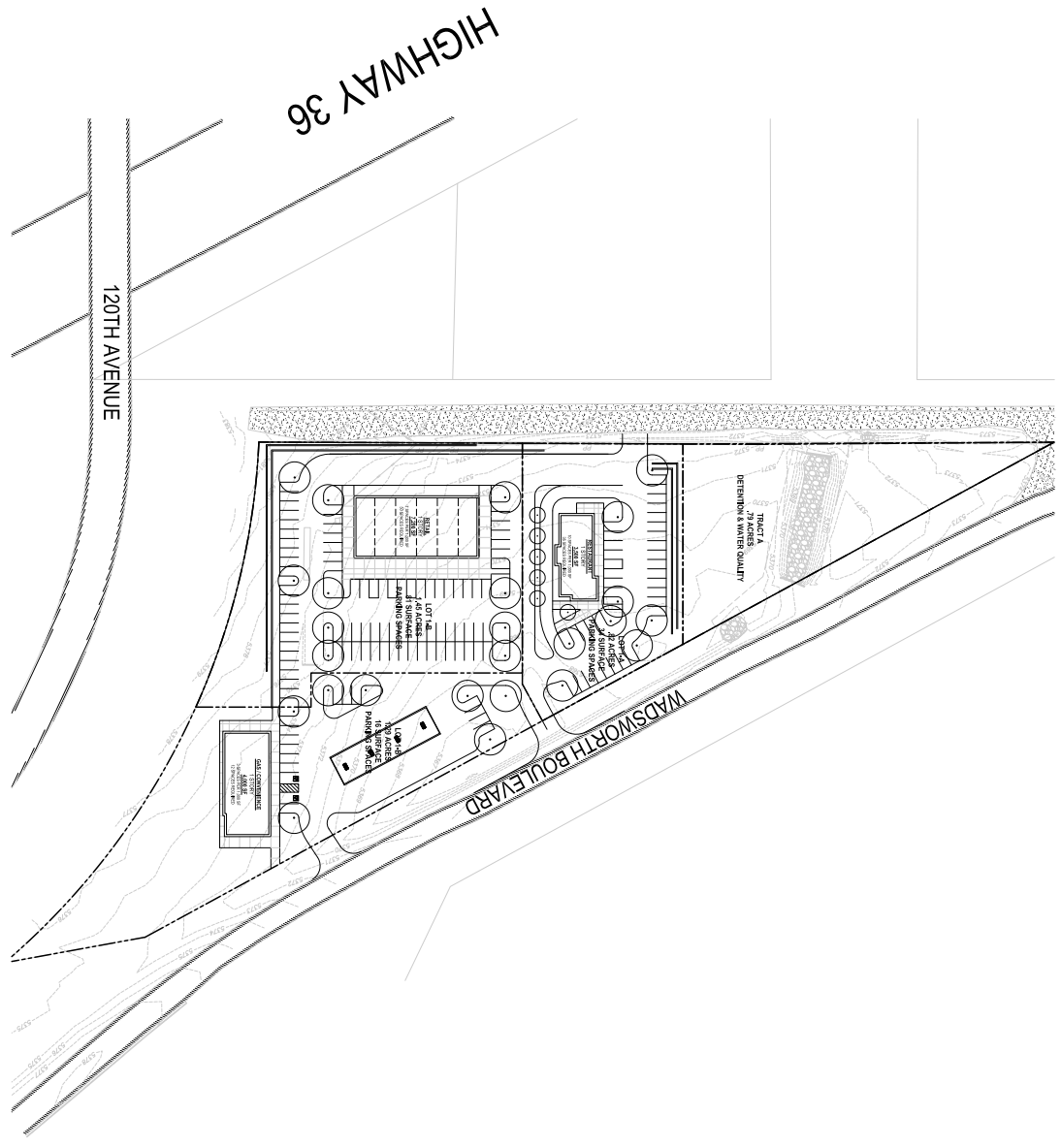


08.25.2017







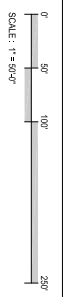


**BROOMFIELD MIXED USE**

Wheeler Properties, Inc.

**CONCEPTUAL SITE PLAN - OPTION C**

2018, Galloway & Company, Inc. All rights reserved.



01.16.2018