

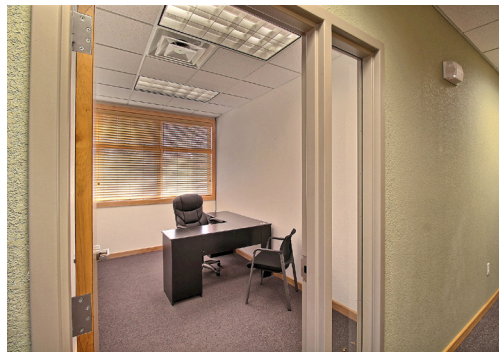
1935 65th Avenue, Suite 2

GREELEY, COLORADO 80634

Lease Rate: \$16.50/SF NNN

NNN = \$10.00/SF NNN

- 1st floor offices: \pm 2,200 SF
- 2nd floor conference room: \pm 650 SF
- Office offers a spacious and inviting layout, including a reception area to welcome clients and guests
- 5 executive or traditional offices
- Excellent visibility off of 20th Street
- Located near restaurants and coffee shops
- 2 monument signs for marketing
- On-site parking
- Available: July 1, 2025



WHEELER
Properties

1130 38th Avenue, Suite B • Greeley, CO 80634
WheelerPropertiesInc.com • 970-352-5860

Contact Jessica Florez
at 970-545-0709

Information deemed reliable, but not guaranteed. Price, terms and conditions subject to change.



1935 65th Avenue, Suite 2

GREELEY, COLORADO 80634



Break Room



Conference Room
on 2nd Floor

WHEELER
Properties

1130 38th Avenue, Suite B • Greeley, CO 80634
WheelerPropertiesInc.com • 970-352-5860

Contact Jessica Florez
at 970-545-0709

Information deemed reliable, but not guaranteed. Price, terms and conditions subject to change.

