

3005 W 29th St, Unit D

GREELEY, COLORADO 80634

Lease Rate:
\$10.00/SF NNN

NNN = \$3.13/SF

Size: ±4,500 sq ft

- Warehouse has three 14' Overhead Doors
- Warehouse Area - 4,020 SF
- Office Area - 480 SF
- 20' Ceiling Clear Height
- Office / Reception Area
- 2 Half Baths
- 1 Full Bath
- Loft Conference Room
- Upstairs Office
- Well-maintained property
- Less than 1 mile to Hwy 34
- Zoning: Commercial High



WHEELER
Properties

1130 38th Avenue, Suite B • Greeley, CO 80634

WheelerPropertiesInc.com • 970-352-5860

Information deemed reliable, but not guaranteed. Price, terms and conditions subject to change.



3005 W 29th St, Unit D

GREELEY, COLORADO 80634



Reception Area



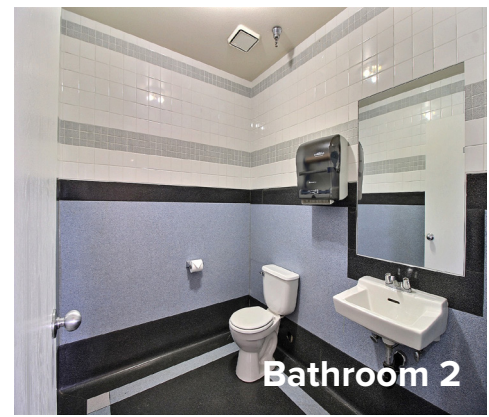
Reception Area



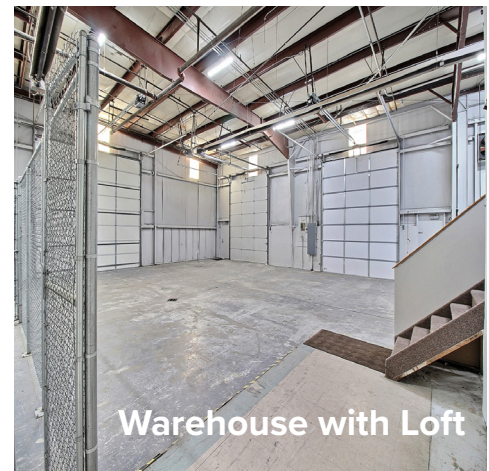
Bathroom 1



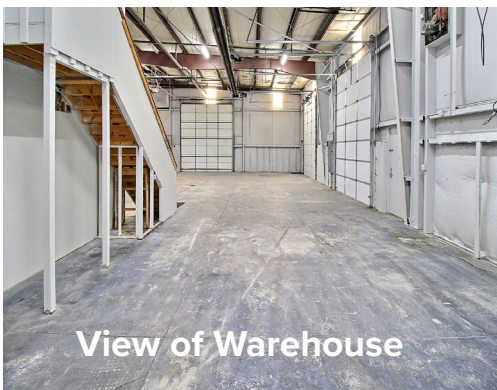
3 Overhead Doors



Bathroom 2



Warehouse with Loft



View of Warehouse



Loft Conference Room



Bathroom 3

WHEELER
Properties

1130 38th Avenue, Suite B • Greeley, CO 80634
WheelerPropertiesInc.com • 970-352-5860

Information deemed reliable, but not guaranteed. Price, terms and conditions subject to change.

