

1407 2nd Street

GREELEY, COLORADO 80631

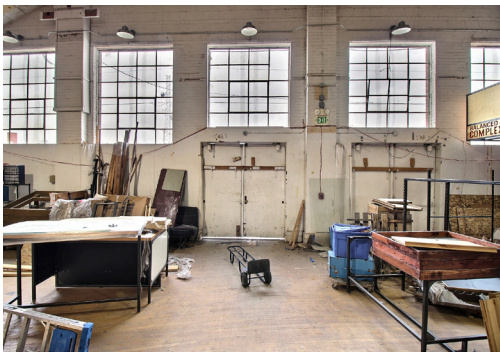


Sale Price: \$1,330,000.00

Building Size: ±19,038 SF

Land Size: ±2.092 Acres

- Former Warnoco Skating Rink and Farmer's Market
- Large Storage Warehouse
- Redevelopment Opportunity
- Fenced Area
- Outside Storage
- Industrial Zoning
- Near Island Grove Park
- 1.5 miles to Hwy 

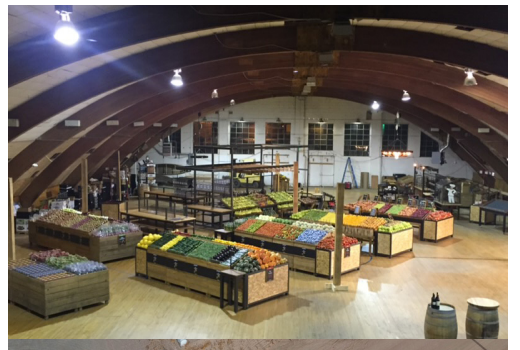
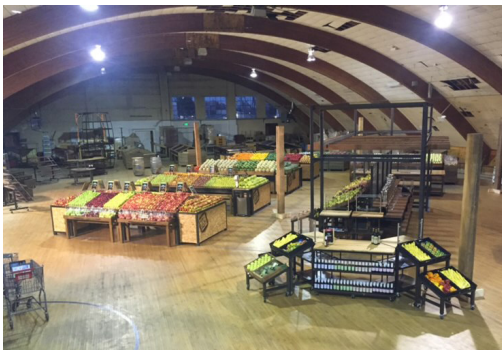


WHEELER
Properties

1130 38th Avenue, Suite B • Greeley, CO 80634
WheelerPropertiesInc.com • 970-352-5860

Information deemed reliable, but not guaranteed. Price, terms and conditions subject to change.





WHEELER
Properties

1130 38th Avenue, Suite B • Greeley, CO 80634
WheelerPropertiesInc.com • 970-352-5860

Information deemed reliable, but not guaranteed. Price, terms and conditions subject to change.

