

5214 20th Street

GREELEY, COLORADO 80634

Sale Price: \$250,160.00

Price per SF = \$40/BSF

Building Envelope: ±6,254 SF

- Building Envelope
- Infrastructure Completed
- Interior Park Area

- Directly Across from AIMS
- Zoned Commercial Low Density
- Traffic Count 15,992 vpd

- 12 miles to
- 2 miles to



WHEELER
Properties

1130 38th Avenue, Suite B • Greeley, CO 80634
WheelerPropertiesInc.com • 970-352-5860

Information deemed reliable, but not guaranteed. Price, terms and conditions subject to change.



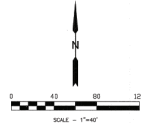
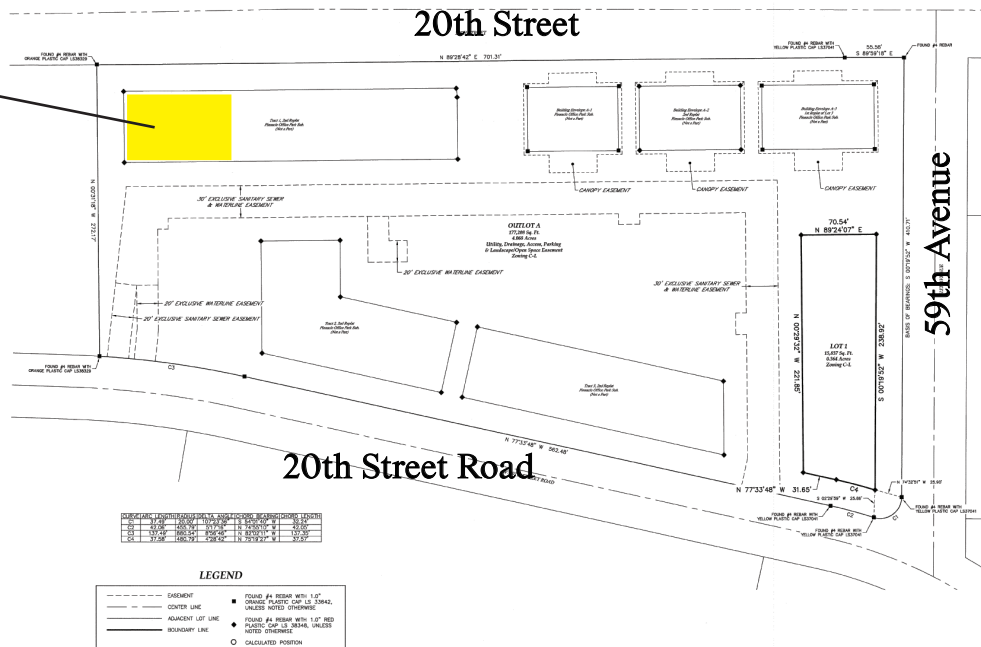
**SUBJECT:
5214 20th Street**



THIRD REPLAT OF PINNACLE OFFICE PARK SUBDIVISION

Being a Replat of Tract 4, Second Replat of Pinnacle Office Park Subdivision
Located in the North Half of Section 15, Township 5 North, Range 66 West of the 6th P.M.,
City of Greeley, County of Weld, State of Colorado

SUBJECT



WHEELER
Properties

1130 38th Avenue, Suite B • Greeley, CO 80634
WheelerPropertiesInc.com • 970-352-5860



Information deemed reliable, but not guaranteed. Price, terms and conditions subject to change.