

# 1130 38th Ave, STE A

GREELEY, COLORADO 80634

## FOR SALE OR LEASE:



New Lease Rate: \$17.00/SF

Former Lease Rate: ~~\$18.00/SF~~

NNN= \$8.77/SF

Sales Price: \$525,000

Size: ±2,251 SF

- Former Doctor's Office
- Reception/Waiting Area
- Restrooms in Suite/Breakroom
- 3 Private Offices
- 6 Patient Rooms
- Nurses Station/Injection Room
- One block from Business Hwy 
- Across from Bittersweet Park

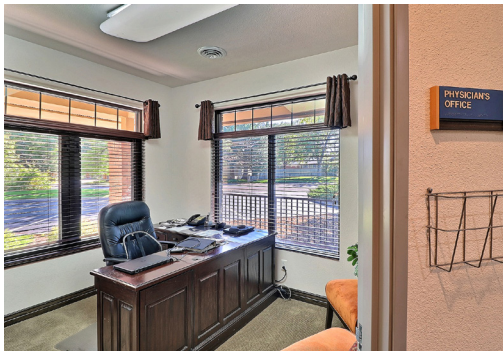


**WHEELER**  
Properties

1130 38th Avenue, Suite B • Greeley, CO 80634  
WheelerPropertiesInc.com • 970-352-5860

Information deemed reliable, but not guaranteed. Price, terms and conditions subject to change.





**WHEELER**  
Properties

1130 38th Avenue, Suite B • Greeley, CO 80634  
WheelerPropertiesInc.com • 970-352-5860

Information deemed reliable, but not guaranteed. Price, terms and conditions subject to change.

