

1919 65th Avenue- C-6

GREELEY, COLORADO 80634



Lease Rate: \$500/Month

Full Service Gross

Size: Single Office ±200 SF

- Located just off 20th St
- Full Service Gross Lease Includes Data
- Waiting Area
- Common Area Bathrooms
- Shared Parking
- West Greeley Location
- Available Immediately
- Common Area Laundry



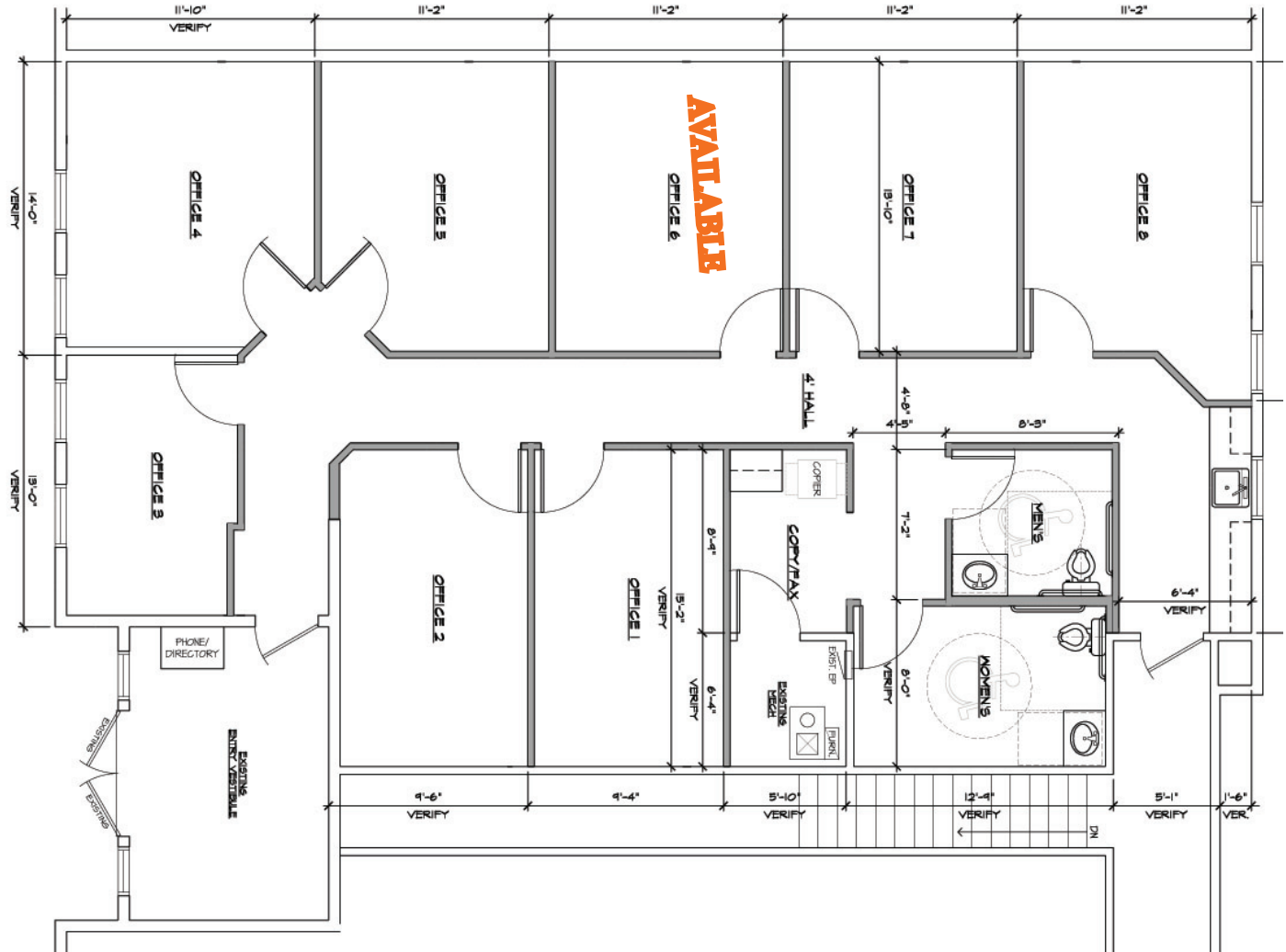
WHEELER
Properties

1130 38th Avenue, Suite B • Greeley, CO 80634
WheelerPropertiesInc.com • 970-352-5860

Information deemed reliable, but not guaranteed. Price, terms and conditions subject to change.



Floor Plan 1919 65th Ave-Unit C #6



Waiting Area

Office 6



WHEELER
Properties

1130 38th Avenue, Suite B • Greeley, CO 80634
WheelerPropertiesInc.com • 970-352-5860

Information deemed reliable, but not guaranteed. Price, terms and conditions subject to change.

