

Hwy 392 and Nankeen Dr

WINDSOR, COLORADO 80550



Sale Price: \$716,082.00

Price per SF= \$1.70

Size: ±9.67 Acres

- Commercial Development Opportunity (Currently Zoned AG)
- Corner Location (Future Stoplight Planned)
- Level Grade Land
- Adjacent to Industrial/Commercial
- New Growth for East Windsor
- 16 Miles to Fort Collins
- 15 Miles to Greeley
- 9 Miles to I-



The property is situated on the east side of Windsor along Hwy 392 adjacent to Falcon Point Business Park and East Point Business Park (Kum & Go, Doug's Diner and Human Bean) as well as new residential development.

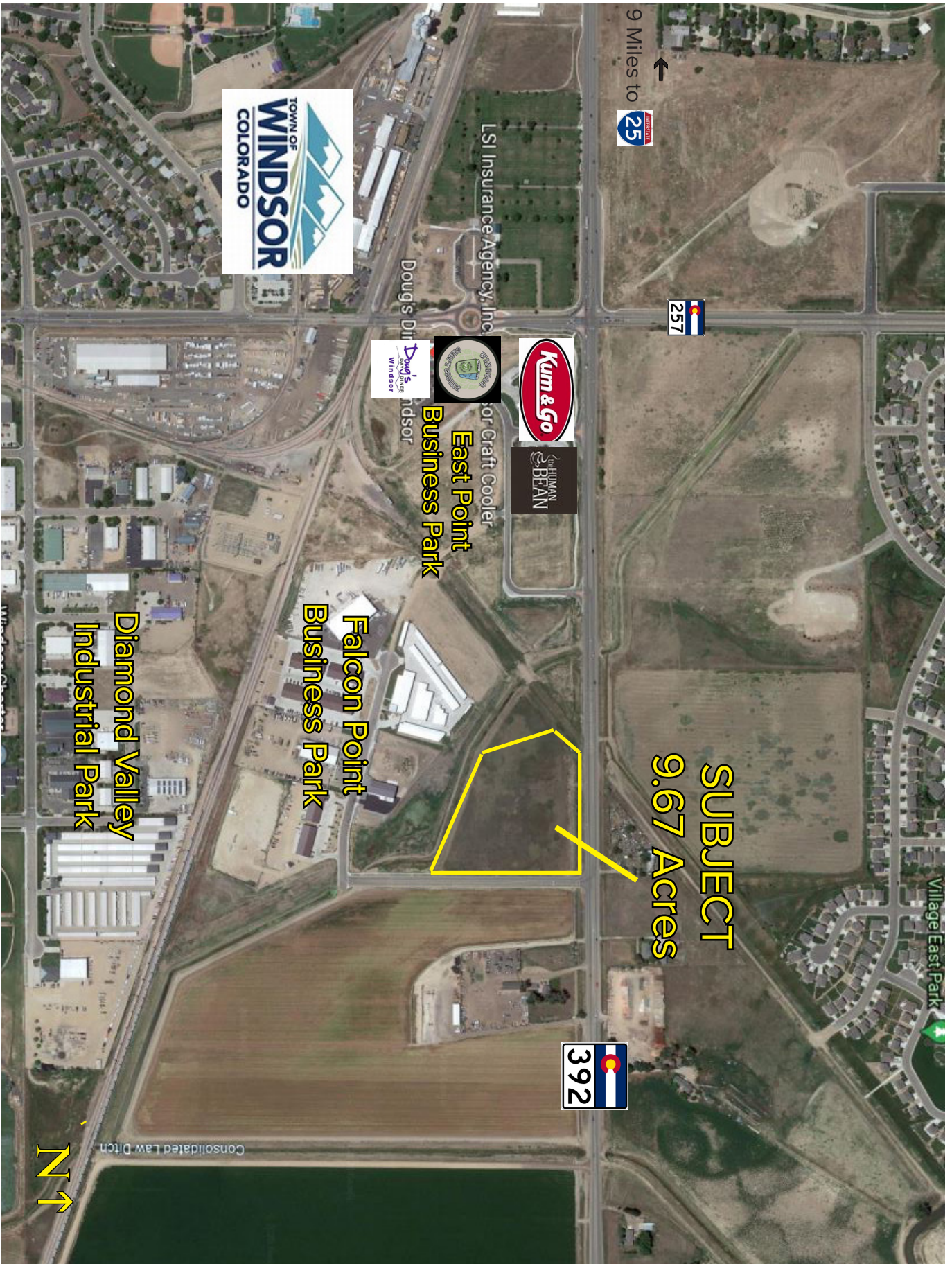



WHEELER
Properties

1130 38th Avenue, Suite B • Greeley, CO 80634
WheelerPropertiesInc.com • 970-352-5860

Information deemed reliable, but not guaranteed. Price, terms and conditions subject to change.





9 Miles to 





N ↑



East Point Business Park

Falcon Point Business Park

Diamond Valley Industrial Park

**SUBJECT
9.67 Acres**

WHEELER
Properties

1130 38th Avenue, Suite B • Greeley, CO 80634
WheelerPropertiesInc.com • 970-352-5860

Information deemed reliable, but not guaranteed. Price, terms and conditions subject to change.

